

# inEos X5 – ONE SCANNER, ALL OPTIONS.

**TOP TECHNOLOGY – MADE IN GERMANY.**

The high-precision scanning element of the inEos X5 was developed specifically for dental applications. It provides outstanding accuracy and highest depth of field. All scanner components were developed in Germany and produced according to strict quality standards.

**INTELLIGENT SCANNING TECHNOLOGY**

The inEos X5 ensures precise digital registration of all indication types with its robot arm, unique 5-axis scanning technology combined with large working area. Preparations are clearly visible.



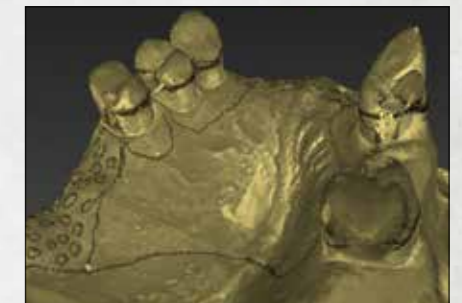
inEos X5 allows you to make scans for all indications and is your specialist for every digitization task. The scanner combines simple operation with specific scanning strategies. It ensures flexible positioning of models and complete freedom of use.



**NEW: Implants.** Using the new one-piece scanbody implant positions can be determined with a high degree of precision even for long-span screw retained implants.\*



**NEW: Triple-tray scan.** The lower and upper jaws together with the bite registration can be scanned from a triple-tray impression tray for smaller jobs.\*



**NEW: Texture scan.** Visual support for example of a metal cast design in inLab software.\*



**Scanning in record time.** Whole jaw models are digitized in less than 60 seconds using the large scanning field.



**Impression scan.** The inEos X5 scans many different shapes and sizes of impression trays with no difficulty.



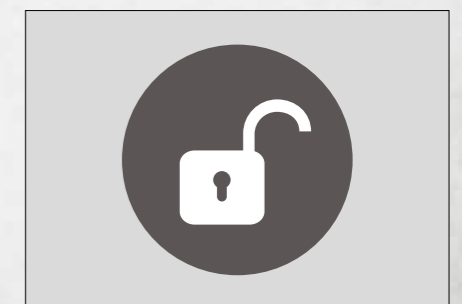
**Large operating range.** Allows positioning of most common articulators and gives fast, unobstructed access to the scan object.



**Multi-die scanning.** Up to four prepared stumps are scanned fully automatically and inserted into the digital model with no manual interaction.



**Manual scanning.** Smaller jobs with only a few preparations can be scanned quickly and efficiently using manual mode.



**Open scanner.** The model data collected with inEos X5 can be exported as STL.

\* Prerequisite: inLab SW 15.0; Screw retained bridges and bars coming soon.

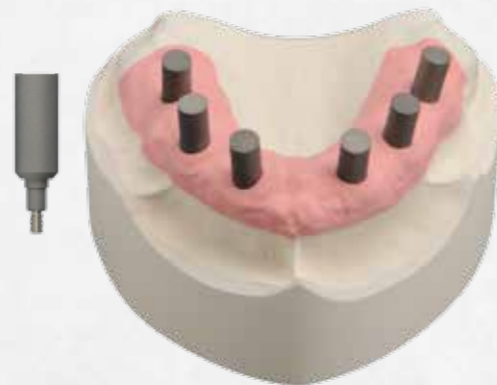


# inEos X5 – HIGH PRECISION.

inEos X5 was developed by Sirona according to the highest quality standards for optical measuring systems. After a short period of time it is already established on the market as the reference scanner. inEos X5 ensures greatest accuracy for all dental technician digitization work – from the palate to the tip of the scanbody.



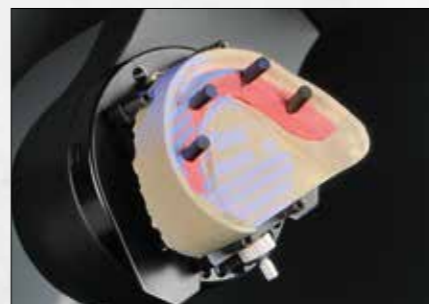
**NEW: inPost\***  
The new one-piece scanbody is made with high precision and its coating and shape are optimally compatible to the special optics of inEos X5.



**NEW: SCAN WORKFLOW**  
The new scan strategy for long-span screw retained implants with inEos X5 determines the position and angle of the implant position with great accuracy.



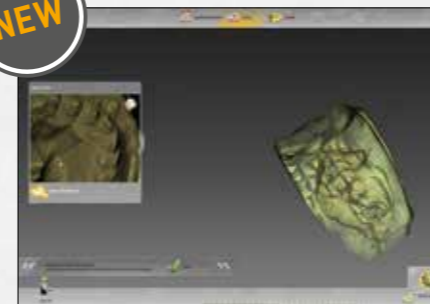
**New: High-precision calibration set\*\*.** The new calibration set and new calibration method ensure long lasting reproducibility and highest precision. Quality assurance documents and protocols can be exported in PDF format for archiving.



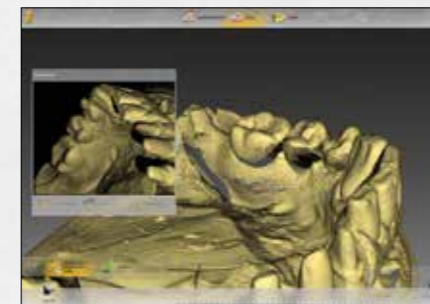
**Special optics.** The camera optics based on digital stripe light projection with blue light are optics produced according to strict quality standards. In addition, inEos X5 scans all situations with the greatest reliability. All optical components of inEos X5 are designed and produced specifically for dental applications.

\* Prerequisite: inLab SW 15.0.  
\*\* In preparation. Coming soon for screw retained bridges and bars.

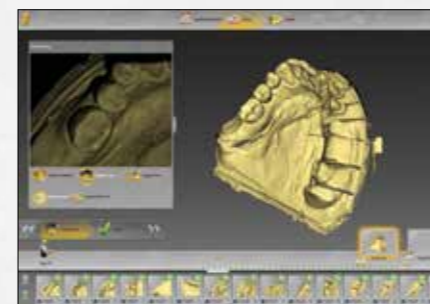
# inEos X5 – SIMPLE.



**Triple-tray scan.** Benefit from the fully digital process – the short time from preparation through scanning bite registration impression trays to the final restoration.\*



**Maximum control.** Supplement the images generated by the fully automatic scan technology with user-specific views. Use the click-to-scan function to capture all areas of the model as desired.



**Intuitive user interface.** A digital model with just a few clicks. The intuitive user interface of inLab Scan SW with a choice of object-specific scan strategies gives you extremely precise, reproducible results for all scanning work.



**Wide range of accessories.** Experience inEos X5 with its custom accessories for fast, easy positioning of all scan objects and save time.

## TECHNICAL DATA



\* Prerequisite: inLab SW 15.0.

inEos X5	Data
Dimensions (WxHxD) in mm	474 x 735 x 460
Weight	40 kg
Mains voltage	100–240 V
Mains frequency	47–63 Hz
Power consumption	150 W
Scanning technique	Digital stripe light projection
Scanning material	All popular dental gypsum except non-absorbent, reflective or transparent materials
Interfaces	USB 2.0
Network connection	via scanner PC: LAN/WLAN