

Your Guarantee of
SUCCESS

Korea Since 1974



Sure-endo

Package Style



Slide Box



Square / Round Vials



Endo-aide



4 Comp. Box



Cell Pack



Obturator

Serving 90 countries around the world since 1974

Approved as the highest quality endodontic products by dental professionals around the world.



Sure-endo
Korea Since 1974

Rev. 04/2015



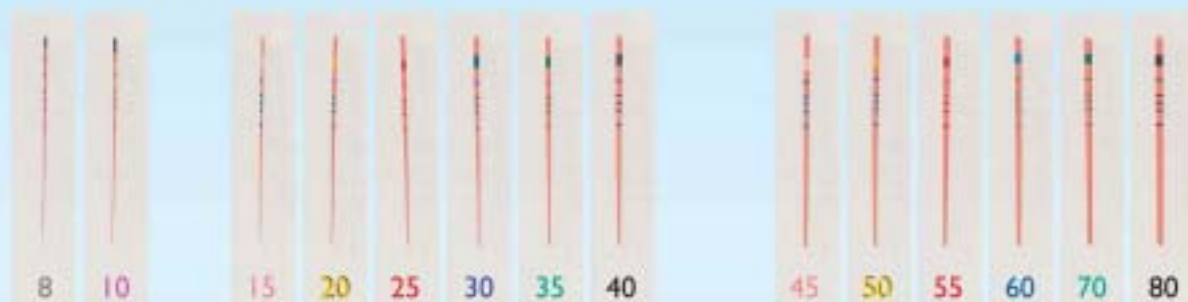
Sure Dent Corporation

#809, 52, Saginokgol-ro, Ankwang-eu, Seongnam-si, Gyeonggi-do, Korea
Tel : +82-31-737-4720 Fax : +82-31-737-4724 E-mail : suredent@suredent.com

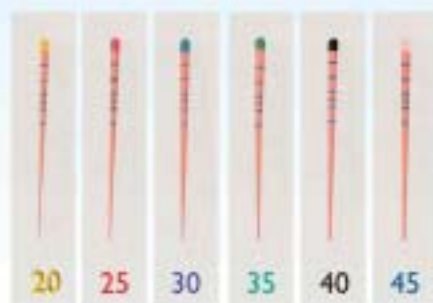
www.suredent.com

Photograph of Actual Sizes

ISO Standardized 0.02

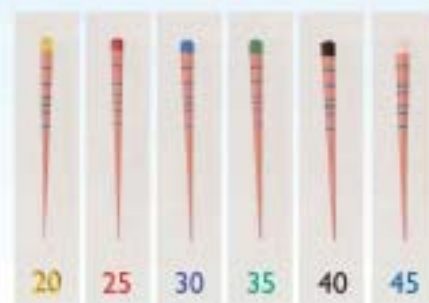


Greater Taper 0.04

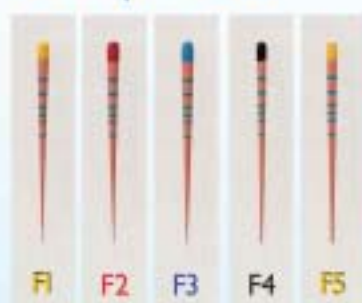


- 6% / 0.06
- 4% / 0.04
- ISO 2% / 0.02

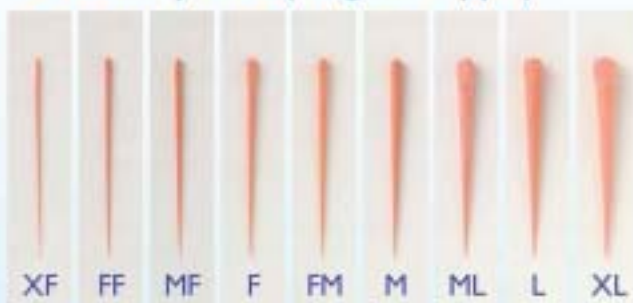
Greater Taper 0.06



Protaper Size



Accessory Size (Regular type)



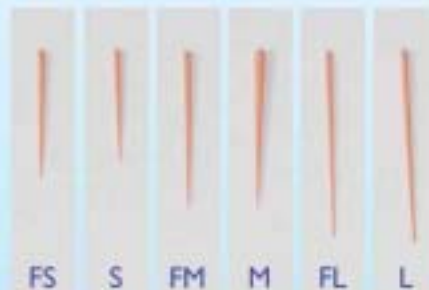
Reciproc Size



Wave-one Size



Japanese Size





- Gutta Percha Points

- Standard Points
- Calibration Markings (Patent No.D961463)
- Bio G/P Points
- Resinated G/P Points

- Obturation Bar

- Use with Obturation Gun
- High Radiopacity
- Flowable & easy to handle
(Soft: melting point:150°C)
(Regular, Hard)

Gutta Percha

All types of Gutta percha points are produced.

- ProTaper (F1, F2, F3, F4, F5)
- ProTaper Next (X2, X3, X4, X5)
- Wave One (S, P, L)
- Reciproc (R25, R40, R50)

Absorbent Paper Points

STERILE R



**Laser Verified for
Tip & Taper Accuracy**

Sterilized endodontic points used in root canal therapy to remove moisture from the root canal or to introduce medicaments

- All kinds of sizes

- Pro Taper sizes
- Greater Taper .04 & .06
- ISO sizes
- All other sizes are available

- Sterilization Assurance Level : 10⁻⁶

- Highly absorbent
- Sterilized by Gamma-Ray